

Product data sheet

Specifications



power supply module Modicon Quantum - 24 V DC 20..30 V - summable

140CPS21400

! To be discontinued on: 31 December 2022

! To be end-of-service on: 31 December 2030

! To be discontinued

Main

Range of product	Modicon Quantum automation platform
Product or component type	Power supply module
Power supply type	Summable

Complementary

Input voltage	24 V (20...30 V) DC
Input current	3800 mA
Inrush current	14 A 20 V 25 A 24 V
Maximum input power interruption	100 ms 1 ms 20 V
Associated fuse rating	5 A, slow-blow
Output voltage	5.1 V DC
Power supply output current	8 A summable
Output overvoltage protection	Internal
Output overload protection	Internal
Power dissipation	6 + (1.8 x I _{out}) where I _{out} is in A
Alarm output	1 NC 6 A 220 V power supply fault
Local signalling	1 LED (green) for power (PWR OK)
Marking	CE
Module format	Standard
Net weight	0.65 kg

Environment

Standards	CSA C22.2 No 142 UL 508
Product certifications	cUL FM Class 1 Division 2
Resistance to electrostatic discharge	4 kV contact conforming to IEC 801-2 8 kV on air conforming to IEC 801-2

Resistance to electromagnetic fields	10 V/m 80...2000 MHz conforming to IEC 801-3
Ambient air temperature for operation	0...60 °C
Ambient air temperature for storage	-40...85 °C
Relative humidity	95 % without condensation
Operating altitude	<= 5000 m

Packing Units

Unit Type of Package 1	PCE
Number of Units in Package 1	1
Package 1 Weight	789.0 g
Package 1 Height	4.57 cm
Package 1 width	16.41 cm
Package 1 Length	30.95 cm
Unit Type of Package 2	P12
Number of Units in Package 2	168
Package 2 Weight	157056.0 g
Package 2 Height	95 cm
Package 2 width	80 cm
Package 2 Length	120 cm
Unit Type of Package 3	S03
Number of Units in Package 3	7
Package 3 Weight	6169.0 g
Package 3 Height	30 cm
Package 3 width	30 cm
Package 3 Length	40 cm

Offer Sustainability

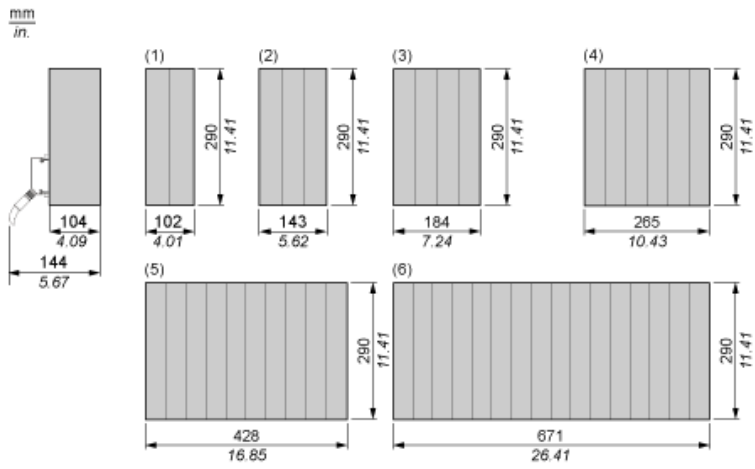
EU RoHS Directive	Pro-active compliance (Product out of EU RoHS legal scope) EU RoHS Declaration
Mercury free	Yes
RoHS exemption information	Yes
China RoHS Regulation	China RoHS declaration
Environmental Disclosure	Product Environmental Profile
Circularity Profile	End of Life Information
WEEE	The product must be disposed on European Union markets following specific waste collection and never end up in rubbish bins
California proposition 65	WARNING: This product can expose you to chemicals including: Lead and lead compounds, which is known to the State of California to cause cancer and birth defects or other reproductive harm. For more information go to www.P65Warnings.ca.gov

Contractual warranty

Warranty	18 months
----------	-----------

Racks for Modules Mounting

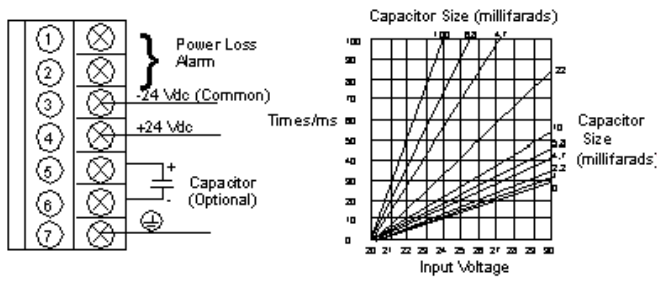
Dimensions of Modules and Racks



- (1) 2 slots
- (2) 3 slots
- (3) 4 slots
- (4) 6 slots
- (5) 10 slots
- (6) 16 slots

24 Vdc/8 A Summable Power Supply Module

Wiring Diagram and Hold-up Capacitor Timing Chart

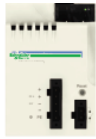


NOTE: A normally closed relay contact rated at 220 Vac, 6A / 30 Vdc, 5A is available on terminals 1 and 2 of the power terminal strip. This contact set may be used to signal input power OFF. The relay will de-energize when input power drops below 8 Vdc.

Recommended replacement(s)

140CPS21400 is replaced by:

1x



power supply module X80 - 24..48 V DC - 31.2 W
BMXCPS3020